

THE TEMPERATURE - - - NOVEMBER 2018 - THE LOVE STORY



## contents

Introduction.....	
09 - Mood Lighting, Like in Your Parents' Basement in the Mid-90s.....	
10 - Autumn, Like the Fall.....	
11 - Meat Cute.....	
12 - Nuclear, Like the Family.....	



## Introduction

What is your purpose?

The exhibitions of *The Love Story* open a number of answers to that question, exploring the various ways that we create meaning in our lives.

In terms of narrative plot, I viewed these exhibitions chronologically as a linear development of the characters of *The Temperature*. The overarching story that these exhibitions play out acting like a family sitcom, something like *Boy Meets World*, *Sabrina*, *the Teenage Witch* or maybe to a lesser extent *Euphoria*.

(09) *Mood Lighting, Like in Your Parents' Basement in the Mid 90s* was an exploration of that first love. It was teenage angst, it was the sparks that flew, the butterflies in your stomach, the not-knowing how to act or react. Fumbling your way through your first kiss on a big comfy couch in your or your friends' basement amongst leftover or broken furniture, lit by neon signs or retro lava lamps. It wasn't a mood on purpose. It was a cobbled together rite of passage.

(10) *Autumn, Like the Fall* was about the death of a loved one, specifically a Father. It was about the conflicting celebration of life and the hole that the passing created. It was about the family as a unit, that somehow continues to function amidst additions and subtractions. How love grows and shrinks over time.

(11) *Meat Cute* was about finding the ONE. As its name suggests, lampooning the romantic comedy trope the “meet cute”... it was at once seemingly perverse, deviant, and messy, while also beautiful, accepting, and wholesome. It was the knowing of completeness and care in the arms of a partner.

(12) *Nuclear, Like the Family* was ultimately about individuation and rebellion. It was about reflecting on the past and the life you now have, wondering what could have been, but being thankful for what was/is. An exhibition about the complete acceptance and love of a Mother.

The exhibitions of The Love Story presented the tangential relationships around the characters/ghosts of the previous month as they became aware of their purpose in life. That purpose being a partnership, both romantic and professional, atypical of The Setting and understanding that they would have to fight for their right to exist.

This purpose is not meant to be specific. There are no preferences or judgments. The works included in the exhibitions run the thematic gamut; the relationships present as heterosexual, homosexual, transgendered; the symbols around death are somber and celebratory; the imagery of motherhood is pure of heart and wistful; love can be seen as life changing, but also fleeting. At

the heart of the Love Story is conflict and contradiction, strength and resilience.

At the end of the day, we hope that our characters (you, the audience) will get their happily ever after, but we (we, the audience) know that that is not always the case. But that shouldn't keep us from doing the best we can.

\*\*\*

Instead of showing the development of the characters themselves, I opted to show the environments or events which helped to shape them. The processes of individuation and finding purpose seemingly have less to do with our own personal drives than it does our surviving the world around us. Often our purpose will let us know where our energies are needed the most.

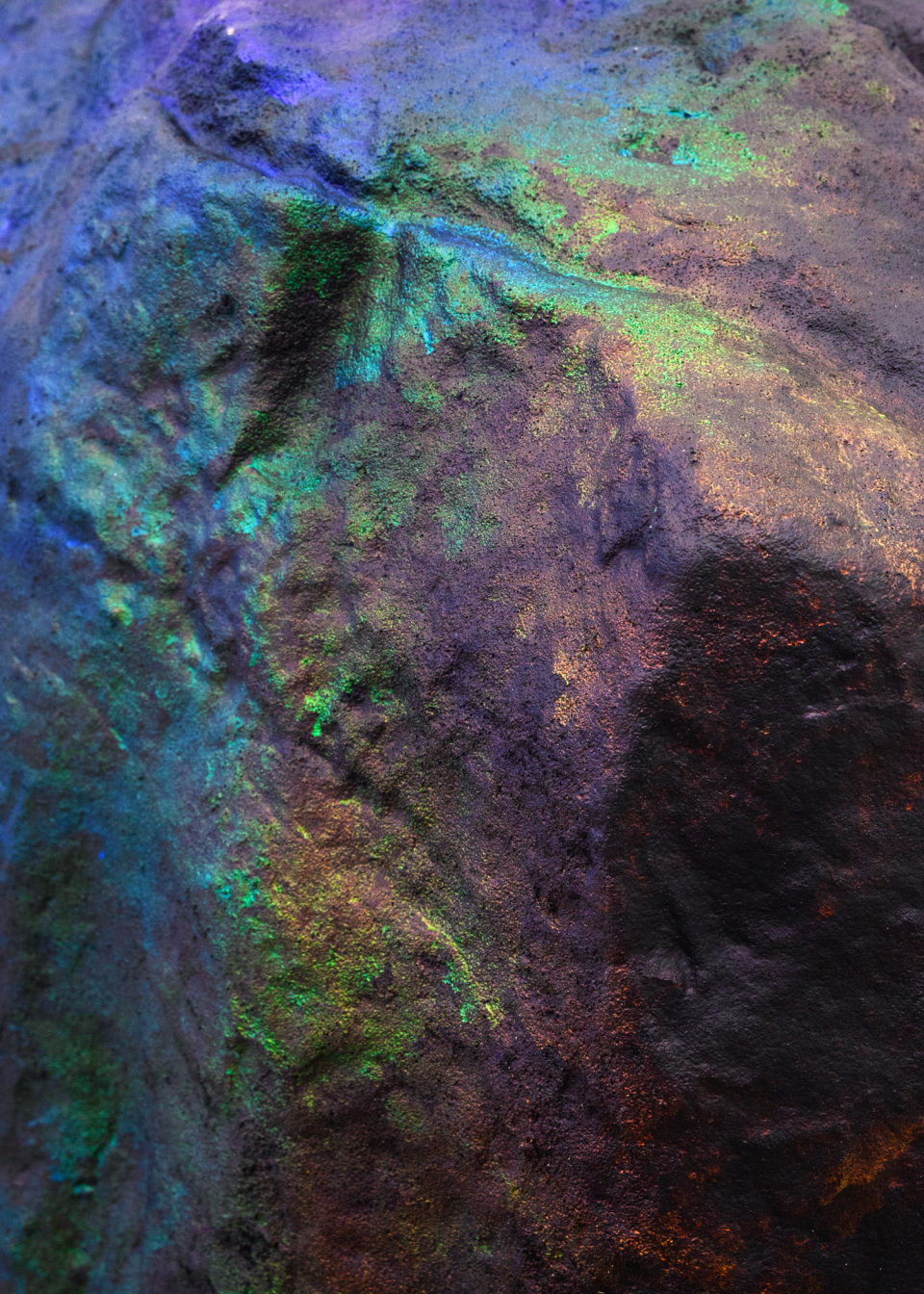
~ Ian Breidenbach  
Curator, The Neon Heater



**MOOD LIGHTING,  
LIKE IN YOUR  
PARENTS'  
BASEMENT  
IN THE MID 90s**

**09**

**THE TEMPERATURE** LOVE STORY



Exhibition 9

**Mood Lighting, Like In Your  
Parents' Basement in the Mid 90s**

Exhibiting Artists:

**Alex Ebstein  
Grant Gill  
Keith Lemley  
Kieran Riley Abbott**

**The Neon Heater Art Gallery  
400 1/2 S Main St. Rm 22  
Findlay, OH**

**MOOD LIGHTING,  
LIKE IN YOUR  
PARENTS'  
BASEMENT  
IN THE MID 90s**

**ALEX EBSTEIN  
GRANT GILL  
KEITH LEMLEY  
KIERAN RILEY ABBOTT**

**09**

**LOVE STORY**

**THE  
TEMPERATURE**



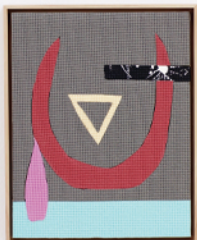




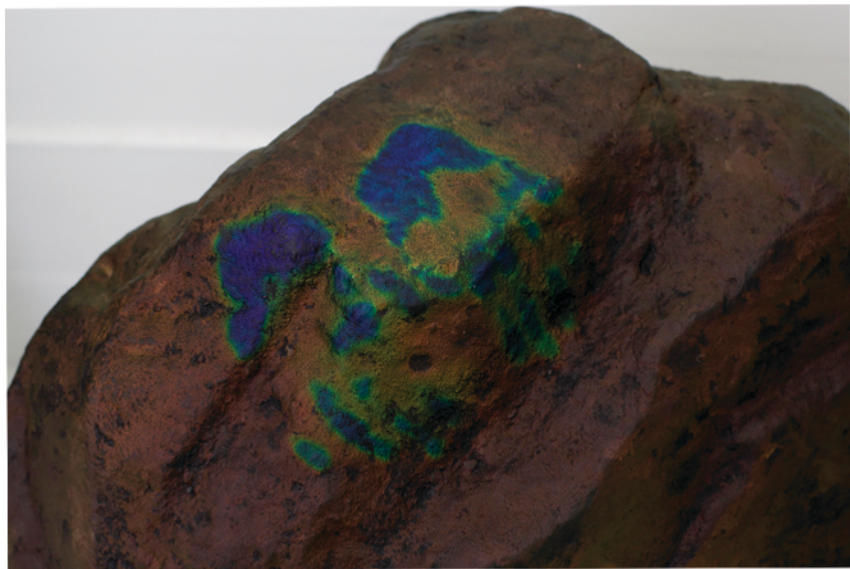
BASEMENT

IN THE MID

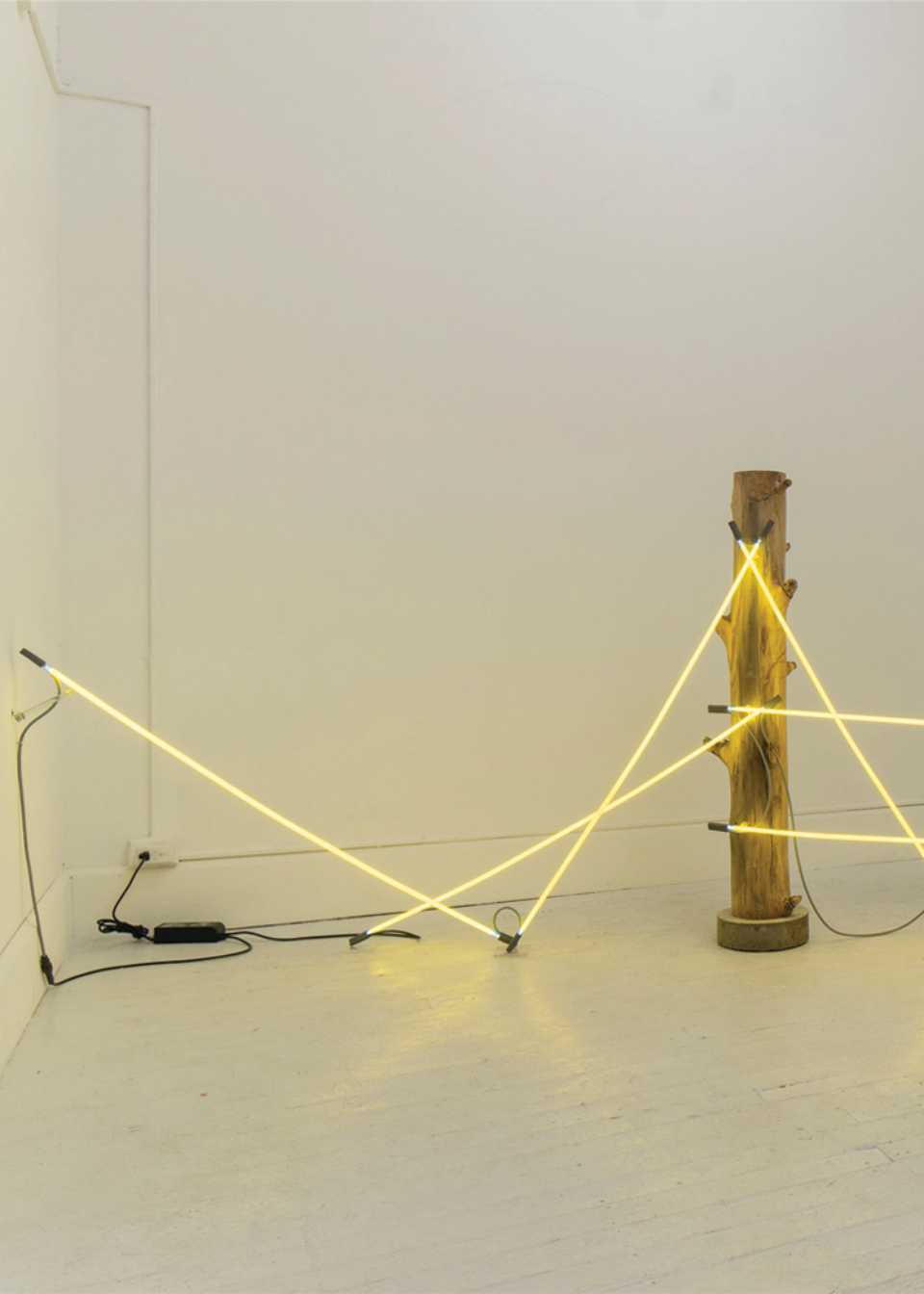
ALEX  
GRANT  
KIERAN  
KIERAN















**AUTUMN,  
LIKE THE FALL**

**10**

**THE TEMPERATURE** LOVE STORY





Exhibition 10

**Autumn, Like the Fall**

Exhibiting Artists:

**Cat Mailloux and Lindsay Mailloux**  
**Jim Fultz**  
**Leah Howell**  
**Luke Ahern**

**COOP Gallery**  
**507B Hagan St.**  
**Nashville, TN**























**MEAT**

**CUTE**

**11**

**THE TEMPERATURE**

**LOVE STORY**





Exhibition 11

**Meat Cute**

Exhibiting Artists:

**Ella Weber**

**Josh Roach**

**Nick Hay & Clarissa Peppers**

**Zachary Hill**

**La La Land**

**641 W Martin Luther King Jr. Blvd**

**Fayetteville, AR**



Seven















Logan  
WRAP





















**NUCLEAR,  
LIKE THE  
FAMILY**

**THE TEMPERATURE** **12** **LOVE STORY**





Exhibition 12

**Nuclear, Like the Family**

Exhibiting Artists:

**Abby Mae Friend**

**Caleb Cole**

**David Onri Anderson**

**Emma Kindall**

**Gregg Evans**

**Inka & Niclas Lindergard**

**Jessica Hope Whittington**

**Feast**

**233 W North Street**

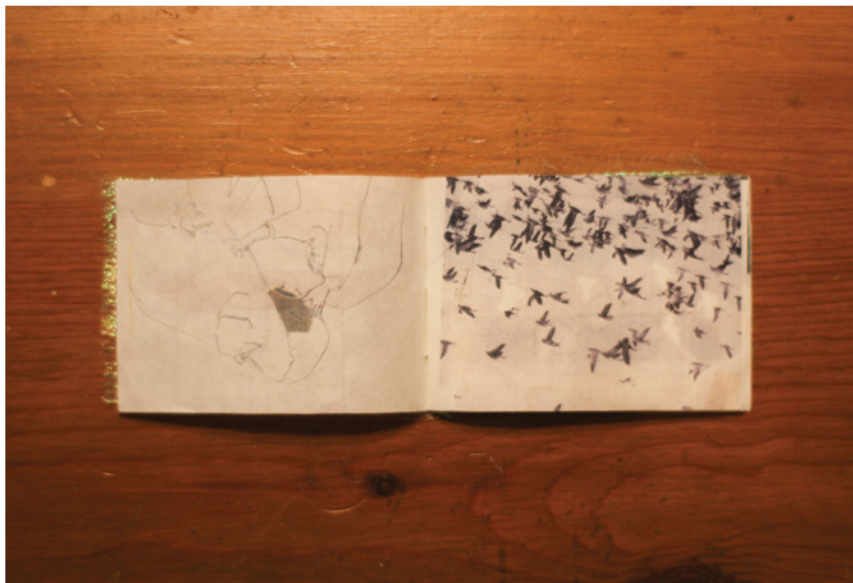
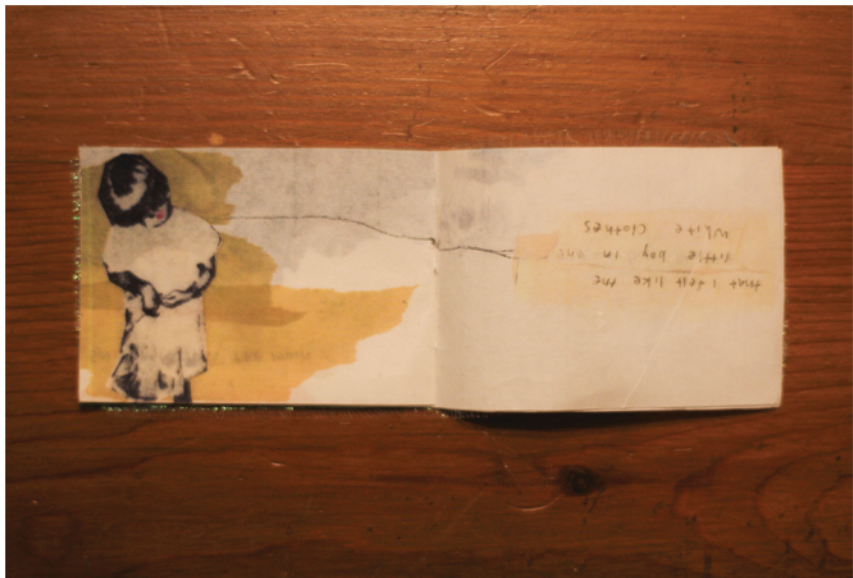
**Fayetteville, AR**























HELP YOURSELF TO CAKE





